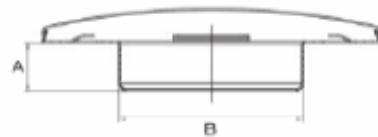


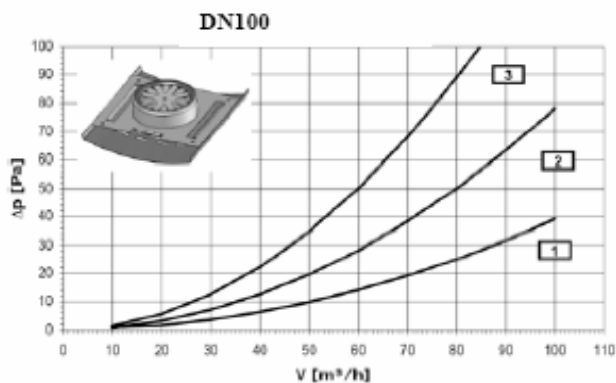
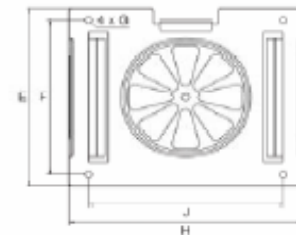
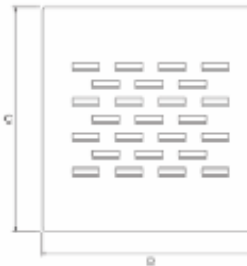
## DESIGNER EXHAUST / SUPPLY Air-Kleen VALVE

Design air passage for use as an supply or exhaust air valve in ventilation systems. Valve body and removable screen manufactured out powder-coated steel sheet. Available in four sizes for the connection to ventilation pipes nominal size 100, 125, 160 or 200 mm. All sizes equipped with:

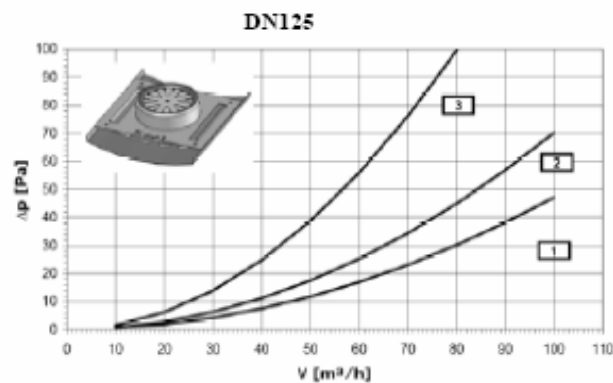
- Removable screen
- Integrated variable adjustable throttle
- Connection for direct assembly with flexible ducts
- Washable aluminum expanded metal filter
- Powder coated Ral 9010



DLD-P	100	125	160	200
A	30	30	30	30
B	98	123	158	198
C	210	210	270	320
D	182	207	242	282
E	150	175	210	250
F	130	155	190	230
G	5.5	5.5	5.5	5.5
H	180	205	240	280
J	150	175	210	250



- 1 DN 100, without filter & fully opened
- 2 DN 100, with clean filter & fully opened
- 3 DN 100, with clean filter, 50 % opened



- 1 DN 125, without filter & fully opened
- 2 DN 125, with clean filter & fully opened
- 3 DN 125, with clean filter, 50 % opened

**Measurement: Filter in the pure condition**

**Version 2007/01**

The information in this technical data sheet was valid at the time of the publication. The enterprise reserves itself at any time the right to accomplish if necessary adjustments and changes of details. In order to exclude misunderstandings, prospective customers should take up contact with the enterprise, in order to determine whether since the date of preparation of these data sheets material and/or changes of information took place.

**MTD-SOLUTIONS Ltd, 8 Burgage House, Blessington, Co. Wicklow. Ireland**

**Tel: +353 (0)45 900 590 Fax: +353 (0)45 900 623**